

MCK SERIES

2-CYLINDER CONCRETE CRUSHER

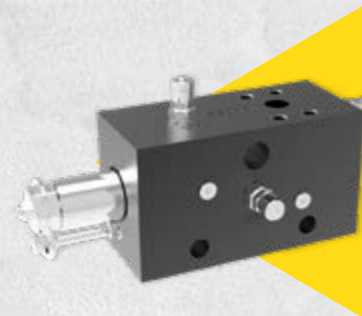
for excavators from 1 to 80 ton

Not even the hardest job can withstand the MCK!

- Double motors for an excellent rotation and high power (MCK18 up).
- Double-turn ball bearing (MCK18 up).
- Jaws highly resistant.
- High cutting power.
- Cylinders fully protected from possible debris during demolition.



"A" JAW



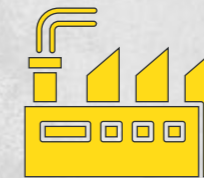
***OPTIONAL SPEED VALVE
FROM MODEL MCK18 UP**



Mining
& Quarrying



Demolition
& Renovation



Metallurgic
Industry



Construction



Recycling



MCK01



**"F" JAW
CRUSHER**



**"A" JAW
CRUSHER**

Models		MCK01	MCK03-A	MCK06-A	MCK03-F	MCK06-F	MCK10-F
Carrier weight	t	1-4*	3-9	7-15	3-9	7-15	10-17
Weight	kg	190	300	650	300	650	1200
Closing force	t**	38	50	60	50	60	70
Jaw opening	mm	390	400	550	400	525	780
Jaw depth	mm	400	430	600	430	600	690
Width upper jaw	mm	50	40	45	40	45	50
Height	mm	980	1150	1500	1150	1500	1800
Length of cutting blades	mm	100	100	165	100	165	200
Opening/Closing Pmax	bar*	220	260	320	260	320	320
Flow	l/min	20-50	30-50	70-120	30-50	70-120	90-150
Rotation Pmax	bar	120	100	100	100	100	140
Flow	l/min	10-25	10-30	10-30	10-30	10-30	40-60
Back pressure max.	bar	-	-	-	-	-	-
Cycle time Opening/Closing	sec	1.8/2.5	1.8/2.5	2.2/3.0	1.8/2.5	2.2/3.0	2.4/3.1

* EXCAVATORS WITH
WEIGHT FORM 1 TO 4 ton.

For excavators with remote control (with sabilisers)

All illustrations and numerical data in this catalog are purely indicative and subject to change at our discretion and without notice. We therefore reserve the right to modify them with a view to improving and continuously developing our product.



MCK SERIES

2-CYLINDER CONCRETE CRUSHER

for excavators from 1 to 80 ton

Not even the hardest job can withstand the MCK!

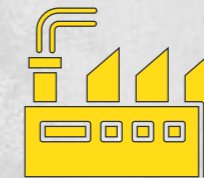
Double motors for an excellent rotation and high power (**MCK18 up**).
Double-turn ball bearing (**MCK18 up**).
Jaws highly resistant.
High cutting power.
Cylinders fully protected from possible debris during demolition.



Mining & Quarrying



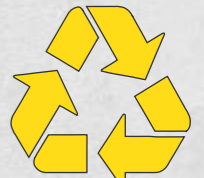
Demolition & Renovation



Metallurgic Industry



Construction



Recycling

- Hydraulic system fully protected by the frame.
- Perfect jaws geometry ensures that blades remain sharp longer.
- Wearing jaws and blades easily replaceable on site
- *optional** Customized jaws are available for every customer need .



"L" JAW
WOOD CUTTER



"F" MCK
CRUSHING KIT



"F" JAW



"A" JAW

USED FOR CUTTING AND CRUSHING CONCRETE WITH STEEL REINFORCEMENT AND FOR CUTTING STEEL STRUCTURES, THE HAMMER CONCRETE CRUSHER HAS BEEN DEVELOPED FOR PRIMARY AND SECONDARY DEMOLITION.

Models

		MCK10-A	MCK15-A	MCK15-L	MCK15-F	MCK18-A	MCK24-A	MCK30-A	MCK40-A
Carrier weight	t	10-17	14-20	14-20	14-20	18-25	20-35	25-45	35-55
Weight	kg	1200	1400	1400	1400	2000	2425	3250	4200
Closing force	t**	70	78	78	78	84	96	108	124
Jaw opening	mm	780	825	854	825	1000	1150	1360	1500
Jaw depth	mm	690	780	780	780	865	935	1335	1135
Width upper jaw	mm	50	55	55	55	60	70	80	90
Height	mm	1800	1980	1980	1980	2195	2390	2545	2845
Length of cutting blades	mm	200	200	200	200	200	250	300	300
Opening/Closing Pmax	bar*	320	320	320	320	320	320	320	320
Flow	l/min	90-150	110-170	110-170	110-170	150-250	200-300	250-350	300-500
Rotation Pmax	bar	140	140	140	140	140	140	140	140
Flow	l/min	40-60	40-60	40-60	40-60	40-60	40-60	40-60	40-60
Back pressure max.	bar	-	-	-	-	-	-	-	-
Cycle time Opening/ Closing	sec	2.4/3.1	2.3/3.0	2.3/3.0	2.3/3.0	2.3/3.0	2.5/3.4	3.3/3.6	3.2/3.4

All illustrations and numerical data in this catalog are purely indicative and subject to change at our discretion and without notice. We therefore reserve the right to modify them with a view to improving and continuously developing our product.



MCK SERIES

2-CYLINDER CONCRETE CRUSHER

for excavators from 1 to 80 ton

Not even the hardest job can withstand the MCK!

Double motors for an excellent rotation and high power (**MCK18 up**).
 Double-turn ball bearing (**MCK18 up**).
 Jaws highly resistant.
 High cutting power.
 Cylinders fully protected from possible debris during demolition.



“C” JAW

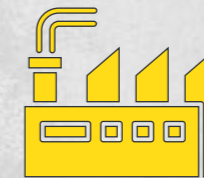
USED FOR CUTTING AND CRUSHING CONCRETE WITH STEEL REINFORCEMENT AND FOR CUTTING STEEL STRUCTURES, THE HAMMER CONCRETE CRUSHER HAS BEEN DEVELOPED FOR PRIMARY AND SECONDARY DEMOLITION.



Mining & Quarrying



Demolition & Renovation



Metallurgic Industry



Construction



Recycling

- Hydraulic system fully protected by the frame.
- Perfect jaws geometry ensures that blades remain sharp longer.
- Wearing jaws and blades easily replaceable on site
- *optional** Customized jaws are available for every customer need .



“C” JAW

Models		MCK10-C	MCK15-C	MCK18-C	MCK24-C	MCK30-C	MCK40-C
Carrier weight	t	10-17	14-20	18-25	20-35	25-45	35-55
Weight	kg	1200	1400	2100	2425	3300	4320
Closing force	t**	70	78	84	96	108	124
Jaw opening	mm	780	825	1000	1150	1360	1500
Jaw depth	mm	690	780	865	935	1335	1135
Width upper jaw	mm	50	55	60	70	80	90
Height	mm	1800	1980	2195	2390	2545	2845
Length of cutting blades	mm	200	200	200	250	300	300
Opening/Closing Pmax	bar*	320	320	320	320	320	320
Flow	l/min	90-150	110-170	150-250	200-300	250-350	300-500
Rotation Pmax	bar	140	140	140	140	140	140
Flow	l/min	40-60	40-60	40-60	40-60	40-60	40-60
Back pressure max.	bar	-	-	-	-	-	-
Cycle time Opening/ Closing	sec	2.4/3.1	2.3/3.0	2.3/3.0	2.5/3.4	3.3/3.6	3.2/3.4

All illustrations and numerical data in this catalog are purely indicative and subject to change at our discretion and without notice. We therefore reserve the right to modify them with a view to improving and continuously developing our product.

